



THE **FUTURE** IS YOURS,
WITH GOD WITHIN

THE FUTURE IS YOURS, WITH GOD WITHIN

Advances in technology and globalization have accelerated the rate at which our world is changing. Growing population has increased the rate of migration to urban areas manifold. So many changes, yet one thing remains constant- the use of steel. The boom in population has been accompanied by a demand for greater infrastructural support through engineering and architecture. To maintain high quality in living spaces and uphold quality of life, GOD TMT was established. We are the first choice of real estate and infrastructure developers, with our benchmark performance and quality products. With GOD in your properties, the future is in your hands. It is yours to build.

IGNITING THE EXCELLENCE WITHIN- PARMESHWAR GROUP

Steel is among the most versatile metals and has had a key role in the progress of civilization for centuries. The multi-functionality of this metal has made lives easier, while adding a new dimension of progress to of our society.

At Parmeshwar Group, the importance of steel was realized at a very early stage. The group was established in the year 1992, by the visionary entrepreneur Shri Indravadan Patel. Riding on the power of steel, the Group has emerged as one of the most dynamic conglomerates in the country and is

climbing new peaks of success every day. Parmeshwar Group is a household name, a force to be reckoned with in Speciality Steel, TMT, Material Handling Equipment and Renewable Energy domains. The companies under the aegis of the Group include Vijay Steel Industries, Vivan Steel and Shree Parmeshwar Steels. Integrity, transparency, and responsibility are the core values that drive us in fulfilling our promise of delivering the perfect TMT bar every time. We don't believe in resting on our laurels, remaining humble in our approach, because nothing is taken for granted here.

**SHREE
PARMESHWAR**
STEELS PVT. LTD.

VIVAN
The Right Steel

**VIJAY
STEEL**
INDUSTRIES



**RENEWABLE
ENERGY**



A LEGACY OF LANDMARKS WITH GOD WITHIN

**HIGH-PERFORMANCE STEEL
THAT IS POWERING
HEAVY-DUTY STRUCTURES
FROM WITHIN**



50+ BRIDGES

BRIDGE THE GAP
WITH **GOD** WITHIN

Actual Site Image | Rishi Dadhichi Bridge, Ahmedabad



10+ SIPHONS

SET BENCHMARKS
OF EXCELLENCE
WITH **GOD** WITHIN

Actual Site Image | Sabarmati Karai Siphon, Ahmedabad

An aerial photograph of the Narmada Canal. A concrete bridge with a white railing spans the canal. A red and white truck is driving on a road to the left of the bridge. The canal is surrounded by green trees and a clear blue sky. In the background, another bridge is visible. A semi-transparent white box with text is overlaid on the right side of the image.

**1000+ KM
CANALS**
REINFORCE
YOUR EXPERTISE
WITH **GOD** WITHIN

Actual Site Image | Narmada Canal



**5000+ KM
ROADS**
TAKE THE ROAD
TO THE FUTURE
WITH **GOD WITHIN**

Actual Site Image | S.G. Highway, Ahmedabad



10+ DAMS

BUILD A SOLID
FOUNDATION
WITH **GOD** WITHIN

An aerial photograph of a sprawling city skyline at sunset. The sky is a warm, hazy orange. In the foreground, a multi-lane highway curves through the city. The middle ground is filled with a dense collection of buildings, including several tall, modern skyscrapers and many smaller, older structures. A large, green, forested hill is visible in the center of the city. The background shows the city extending to the horizon under the soft light of the setting sun.

50000+
BUILDINGS,
100+
SKYSCRAPERS
TOUCH THE SKY
WITH **GOD** WITHIN



FULFILLING THE PROMISE OF PERFECTION WITHIN

Our future-ready plant enables us to deliver high-performance steel from pure sources of raw materials like sponge iron ore, enabling us to accomplish new benchmarks of manufacturing capabilities in billet making. Our equipment ensures short turnaround times and the best quality GOD TMT steel for your projects. With our highly energy-efficient integrated plant, we are able to deliver 'Green Steel' continuously. It has enabled us to realize 15% energy efficiency. It also highlights our quest for better sustainability. The plant is ISO 9001: 2000 Certified and the products are BIS Certified. We have also established a captive power plant fuelled by alternative sources of energy. With continuous upgrades, we will continue to make our growth more meaningful.

Our quest can be better understood as - Integrated Plant, Intelligent Solutions, International Quality TMT Bars.



The Hon'ble CM of Gujarat,
Shri Bhupendra Patel
appreciating the energy-efficient
'Green Steel' initiative

UNCOMPROMISED COMMITMENT WITHIN EVERY STEP



Sponge Iron

A mixture of Sponge Iron and DRI is taken



Steel Melting & Refining

The mixture of sponge iron and DRI is fed into induction furnaces of capacities 25 MT in a steel melting shop to produce supreme quality mild steel.



Cast Billets

After rigorous treatment and chemical analysis, the molten steel is then cast into square billets of the desired cross-section in a high-speed Continuous Casting Machine.



Rolling Mill

Finally, the hot billets are laid on insulated roller transfer tables to the rolling mill. The robust rolling lines help shape steel that is precise, accurate, and features intricate and superior detailing.



Quenching

The hot metal is quenched using the THERMEX cooling system to adjust mechanical properties thereby providing necessary strength and flexibility to the steel.



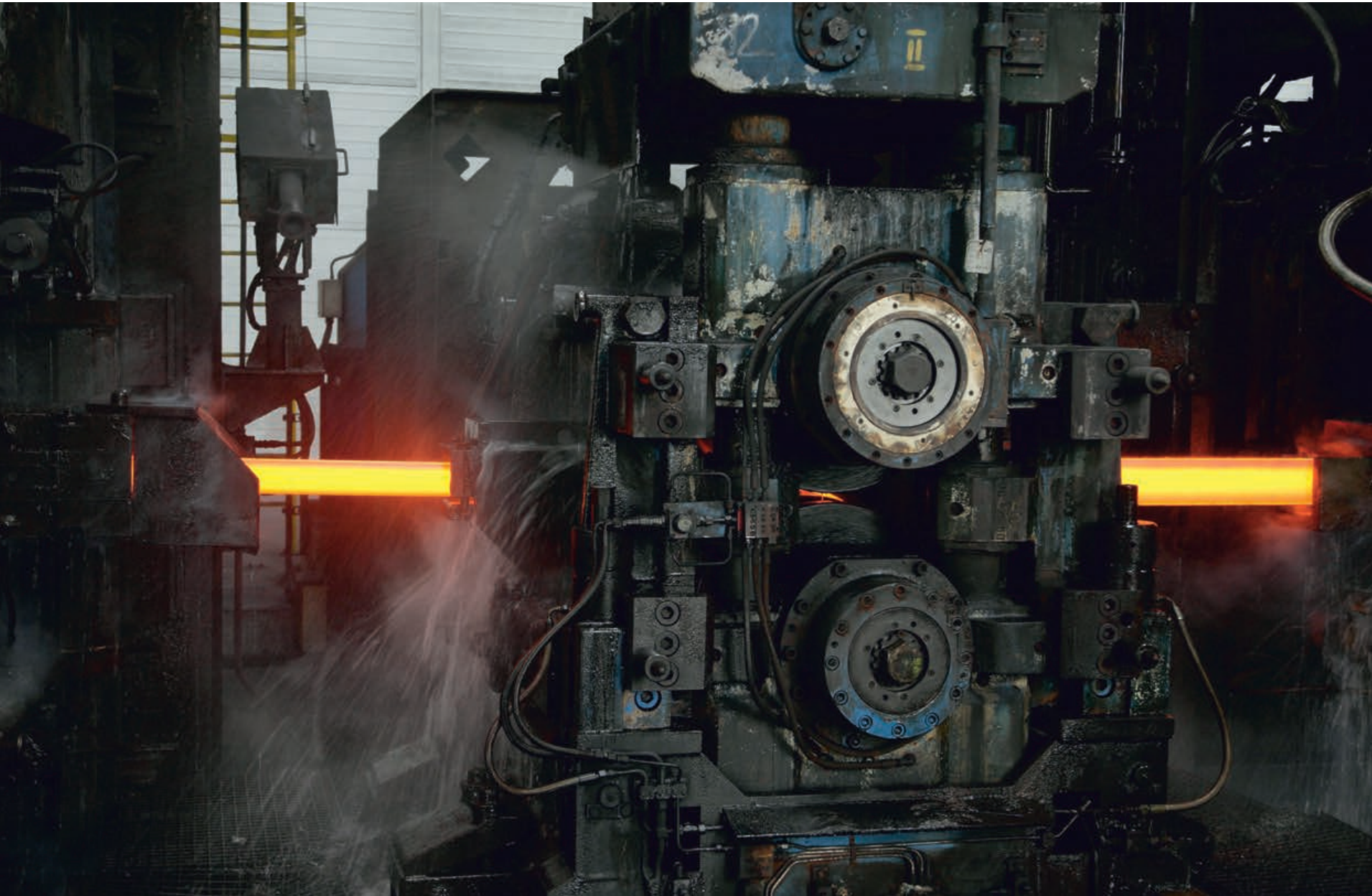
Quality Testing

Mechanical Testing, strength and toughness tests, along with the ultimate stress test, is conducted using a UTM (Universal Testing Machine). The bars are further tested for their chemical composition to ensure they are compliant with necessary standards.



Storage and Dispatch

With an efficient storage and supply chain, we deliver all grades of bars on time and raise the bar of customer satisfaction. Before dispatching to our strong network of 1500+ dealers, every truck is weighed to ensure the right quantity, every time.



DISCOVER THE DIFFERENCE WITHIN

Advanced Hot Rolling mills

Robust rolling lines help shape steel that is precise and accurate with intricate and superior detailing. Our state-of-the-art infrastructure includes a fully automatic, continuous mill with sense logic controls. The production process includes the use of fast, responsive PLCs, high-accuracy HMDs and sensors - from Siemens and Parker - to ensure desired characteristics with uniform cross-section and ribs in each bar. It also enables us to roll steel with consistency and perfection based on the exact product dimensions. The billet reheating rolling mill furnace, and gas-fired billet-reheating pusher furnace, further enable us to control our production with utmost precision.



State-of-the-art Steel Melting Shop

The billets used for manufacturing GOD TMT Bars are manufactured as per IS standards (2831-2012 & 2830-2012). A mixture of sponge iron and DRI is fed into induction furnaces of capacities 25 MT in a steel melting shop to produce supreme quality mild steel. After rigorous treatment and chemical analysis, the molten steel is then cast into square billets of the desired cross-section in high-speed (Continuous Casting Machine). The cast steel is then cooled down with the help of regulated water to form billets of an accurate and precise cross-section. As the billets pass towards the cooling bed, they are perfectly cut into the required lengths by high accuracy shearing machines. Finally, the hot billets are laid on the insulated roller transfer tables to be transported to the rolling mill.



THERMEX

Quenching System

From contemporary edifices to mammoth domes, and cosy homes to opulent settings, steel is an important parameter of strength and support. Hence, at GOD TMT, we offer an unmatched combination of outstanding strength and superior flexibility. Every bar is thermo-mechanically treated with the help of the THERMEX Quenching System. Due to unmatched strength and the ability to be moulded into smaller diameter circles, it can be shaped into rings effortlessly.

THERMEX Quenching System is a globally accepted technology. It is a patented technology by Hennigsdorfer Stahl Engineering GmbH (HSE), Germany. This unique cooling technology enables the bar to have a hardened exterior core made up of tempered martensite and a ductile fine-grain ferrite-pearlite core.

Understanding the 3 stages of THERMEX Technology

QUENCHING: After the hot bar leaves the rolling mill, it is rapidly quenched in water using a special setup. As a result, the surface becomes hard martensitic while the core still remains hot.

SELF-TEMPERING: After quenching, as the core is still hot, the transfer of heat takes place from the core to the surface. Due to this self-tempering, the surface becomes tempered martensite.

ATMOSPHERIC COOLING: After self-tempering, the bar reaches the cooling bed. Here, the core becomes a ductile ferrite-pearlite structure.

These stages add to the much-needed strength and ductility of our TMT Bars.



PUSHING THE FRONTIERS OF ADVANCEMENT FROM WITHIN

Exceptional quality TMT bars cannot be manufactured with an ordinary setup. We have meticulously crafted a technologically advanced setup that is controlled by a PLC system, which seamlessly manages high-end automation. Technology without experience or expertise is futile. Therefore, our team is led by industry stalwarts and managed by highly proficient technicians. This human-technology synergy creates the power within that drives us towards excellence every day. To leave nothing to chance, we have also created an advanced quality control setup. From raw materials to finished products, everything is scientifically tested on various parameters to ensure delivery of 100% exceptional grade of TMT bars, every time.

CONTINUALLY BENCHMARKING THE PERFECTION WITHIN



Consistency of Quality:

GOD TMT Bars are made from billets. Pusher type reheating furnace, automatic continuous mill, and heavy-duty DC voltage drives, THERMEX quenching system, state-of-the-art computerized physical testing laboratory, combined with a valuable experience of a decade - all blend to bring to you optimum quality bars, designed from international standard steel, in close to a quarter of a minute.



Concrete Bonding:

It is decisive that each bar needs to bond with concrete for long-standing structures. Stronger bonds guarantee years of steady construction. Due to high-tech machinery, GOD TMT bars are produced with seamless ribs. Evenly spaced, deep dented designed ribs assist in strong bonding.



Welding Capacity:

The strength of the welding is directly dependent on the carbon content of the bar. While manufacturing, optimum care is taken to keep the carbon content even lower than the IS - 1786 specified standards. To achieve trouble-free and sturdy welding, the carbon content needs to remain at a maximum of 0.25%. Excellent welding capacities like this assist in assembling the skeletal structure in a shorter period.



Earthquake Resistance:

An icon of strength, GOD TMT Bars, comprise a special dual-core design. As a result, they endow a structure with added strength and optimum ductility. Its sturdy outer layer is equipped to encounter shock energy during earth tremors and its soft inner layer provides magnetic force, making it the most ideal solution in earthquake-prone regions.



Customer- Centric Approach:

Our customer service follows the path of Gandhian philosophy. Our motto is to provide quick and satisfactory services to our customers and deliver value for money, every time. Our proficient and diligent management team always ensures we not only deliver on time, but also take utmost care of after-sales services too.



On-time Delivery:

Our integrated plant, with a strategic network of 1500+ dealers, helps us in efficiently delivering products on time, every time. It also helps us to enhance customer satisfaction.



FE 550D- FUTURE IS FLEXIBLE YET STRONG WITH GOD WITHIN

We produce Fe 550D grade steel with our advanced manufacturing capabilities that help you build the future with confidence. The high strength and ductility of GOD Fe 550D make it one of the most preferred choices for earthquake resistant structures. Its superior design and structural efficiency provide strength and flexibility to your edifices.

The Benefits of GOD TMT Fe 550D Rebars

Better Strength

Get 32% better strength than conventional steel (415 MPa vs 550 MPa) with GOD Fe 550D TMT Rebars.

Reduced Steel Consumption

Structures with GOD Fe 550D TMT rebars can help reduce your consumption of overall steel by 12-15%

Better Bar Spacing

Due to the higher diameter and superior strength of GOD Fe 550D TMT rebars, you can enhance bar spacing and reduce bar congestion.

Savings in Labour Cost

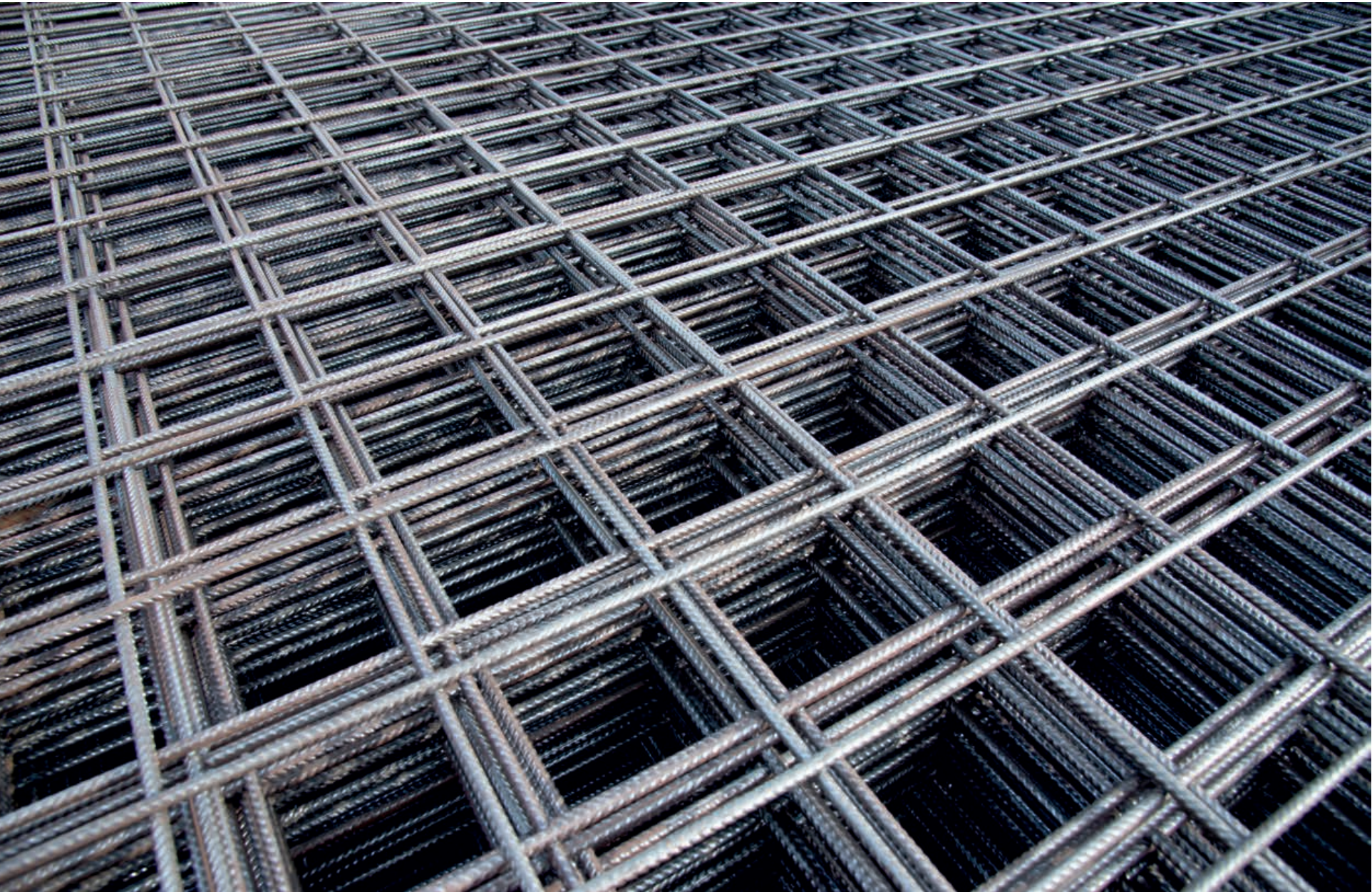
Lesser steel means more savings in your labour cost

Faster Construction

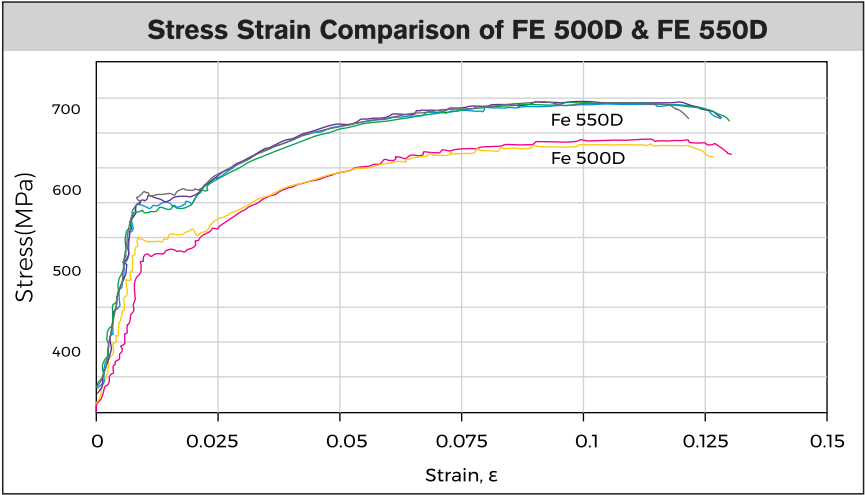
With lesser GOD Fe 550D TMT rebars, you can improve your construction efficiency with less time involved in placing/tying bars.

More Savings

GOD Fe 550D TMT rebars can help reduce the overall consumption of steel, thereby resulting in increased savings. It can also increase your Floor Space Index to generate extra space.



SAVE
MORE
WITH
STRENGTH
WITHIN



BEAM DESIGN WITH M30	
230x450 Beam	800x1800 Beam
Reinforcement savings	Reinforcement savings
415/550D - 55%	415/550D - 57%
500/550D - 9%	500/550D - 18%

COLUMN DESIGN WITH M40	
300x750 Column	600x750 Column
Reinforcement Savings	Reinforcement Savings
415/550D - 17%	415/550D - 20%
500/550D - 7%	500/550D - 7%%

Chemical & Mechanical Properties of GOD FE 550D		
Rebar Grade	BIS FE 550D	GOD FE 550D
% Carbon	0.25	0.22-0.25
% Silicon	-	0.15-0.25
%Manganese	-	0.95-1.05
% Sulphur (Max)	0.04	0.03
% Phosphorous (Max)	0.04	0.03
% Sulphur + Phosphorous	0.075	0.055
% Carbon Equivalent (CE)	0.42	0.35-0.41
Yield Stress (N/mm2) min	550	575
% Elongation (min)	14.5	16
Tensile Strength (N/mn2) min	600	645
UTS/YS Ratio	1.08	1.12

Mechanical Properties

Grade	Fe 500		Fe 500D	
	IS 1786:2008	GOD TMT 500	IS 1786:2008	GOD TMT 500D
Ultimate Tensile Strength	500	520	500	530
Tensile Stress	545	580	565	600
(UTS/YS) Ratio	1.08	1.12	1.10	1.12
Elongation (%)	12.0	16.0	16.0	18.0
Total Elongation (%)	-	-	5.0	7.0

Chemical Properties

Grade	Fe 500		Fe 500D	
	IS 1786:2008	GOD TMT 500	IS 1786:2008	GOD TMT 500D
C% (Max)	0.3	0.25	0.25	0.23
S% (Max)	0.055	0.050	0.040	0.040
P% (Max)	0.055	0.055	0.040	0.040
S + P (%)	0.105	0.105	0.075	0.075
CE (%)	0.42	0.42	0.42	0.42

Physical Properties

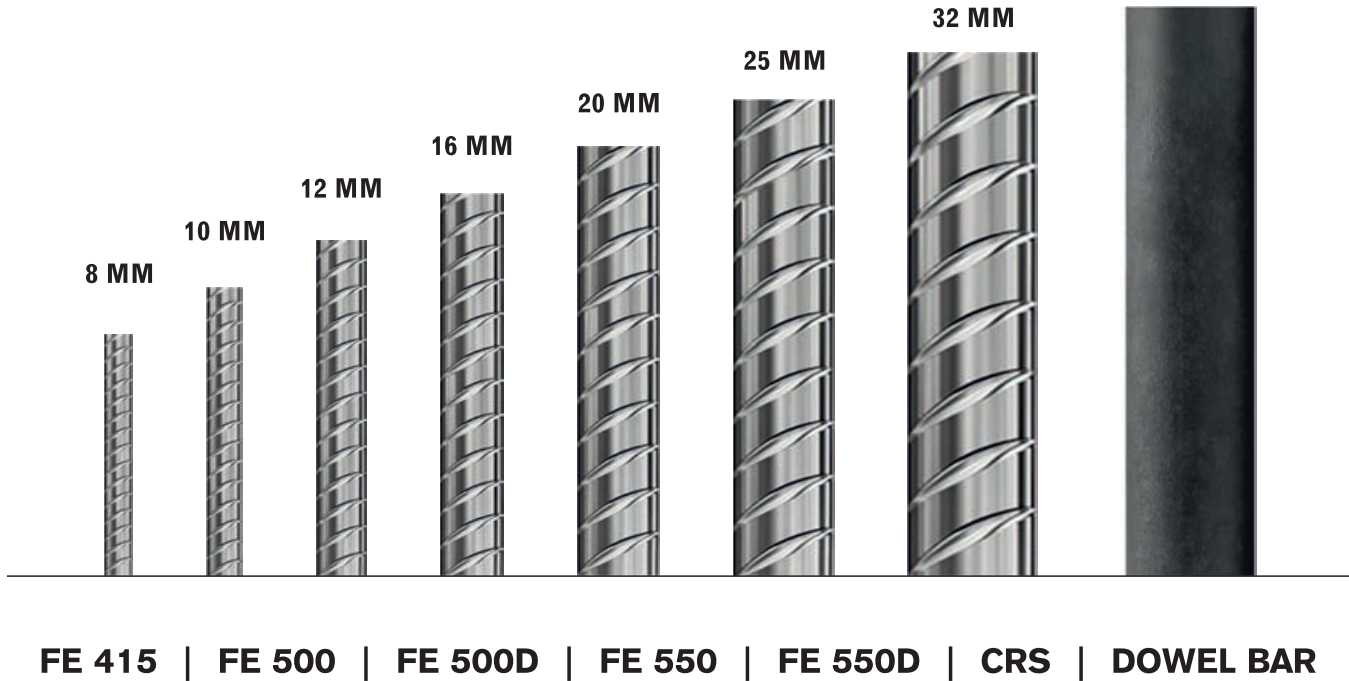
Grade	CRS 500		CRS 500 D	
	As Per IS 1786:2008	GOD CRS 500	As Per IS 1786:2008	GOD CRS 500
0.2%Proof/Yield Stress (N/mm2)min	500.00	545.00	500.00	520.00
Tensile Strength (N/mm2).min	545.00	580.00	560.00	590.00
%Elongation (min)	12.00	15.00	16.00	17.00
%Total Elongation (min)	-	-	5.00	5.00
Ratio (UTS/YS) Min	1.08	1.10	1.10	1.12

Physical Composition

Grade	CRS 500		CRS 500 D	
	As Per IS 1786:2008	GOD CRS 500	As Per IS 1786:2008	GOD CRS 500D
C% (max)	0.15	0.15	0.15	0.15
S% (max)	0.055	0.05	0.055	0.05
P% (max)	0.12	0.100	0.12	0.08
Cu%	-	0.22-0.45	-	0.15-0.25
Cr%	-	0.22-0.45	-	0.35-0.45
CRE value% (Cu+Cr+P) min	0.40	0.50	0.40	

OUR RANGE OF PERFECTION WITHIN

Available sizes and grades



DOWEL BARS SEAMLESS TRANSFER OF LOAD WITH GOD WITHIN

Technically, Dowel Bars are mostly used in concrete pavements with high vehicle movement. It seamlessly transfers load from one slab to its adjacent one, thereby reducing overall impact. It also enables the expansion and contraction of slabs independently

At GOD, we manufacture fine grades of Dowel bars in our advanced and integrated plant. It is made using the finest raw materials and modern processes. GOD Dowel Bars have exceptional quality and can be delivered to you in customised sizes to ensure minimal wastage.

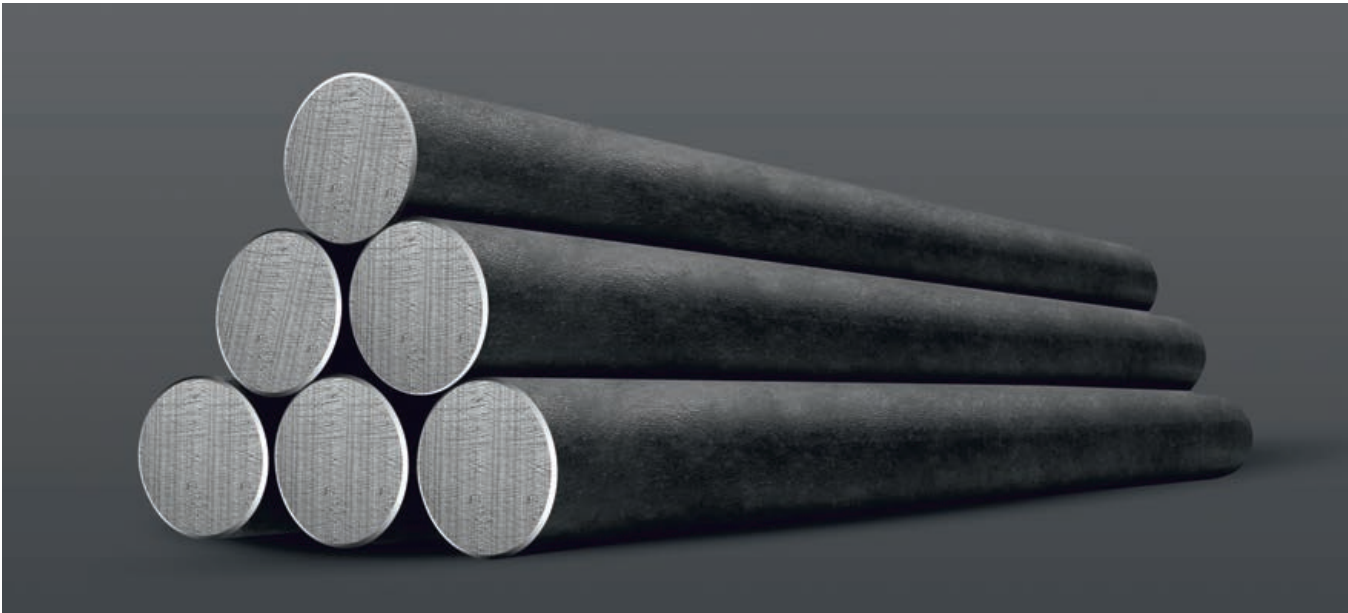
Benefits

- Enhances the load-bearing capacity of the slab
- Enhances joint life, reduces joint cracking
- Reduces deflection and stress

Chemical Properties	Elements (%)	IS 2062-2011 E-250	GOD TMT E-250
	Carbon	0.23	0.23
	Manganese	1.50	0.80
	Sulphur	0.45	0.45
	Phosphorus	0.45	0.45
	Silicone	0.40	0.40

Mechanical Properties	Elements (%)	IS 2062-2011 E-250	GOD TMT E-250
	Yield Strength, Min (N/mm ²)	250	320
	Ultimate Tensile Strength, Min (N/mm ²)	410	420
	Elongation, Min (%)	23	23

BIS Tolerance & Saving with GOD TMT	Size	Sectional Weight				Weight Per Meter	
		Lower Weight	Standard Weight	Higher Weight	Tolerance	Size	(kg/m)
	(mm)	(kg/m)	(kg/m)	(kg/m)	(kg/m)	(mm)	Lower
	8	6.125	6.347	6.504	+3	32	6.161



OUR PARTNERS OF PERFECTION WITHIN

1500+
Dealer Network

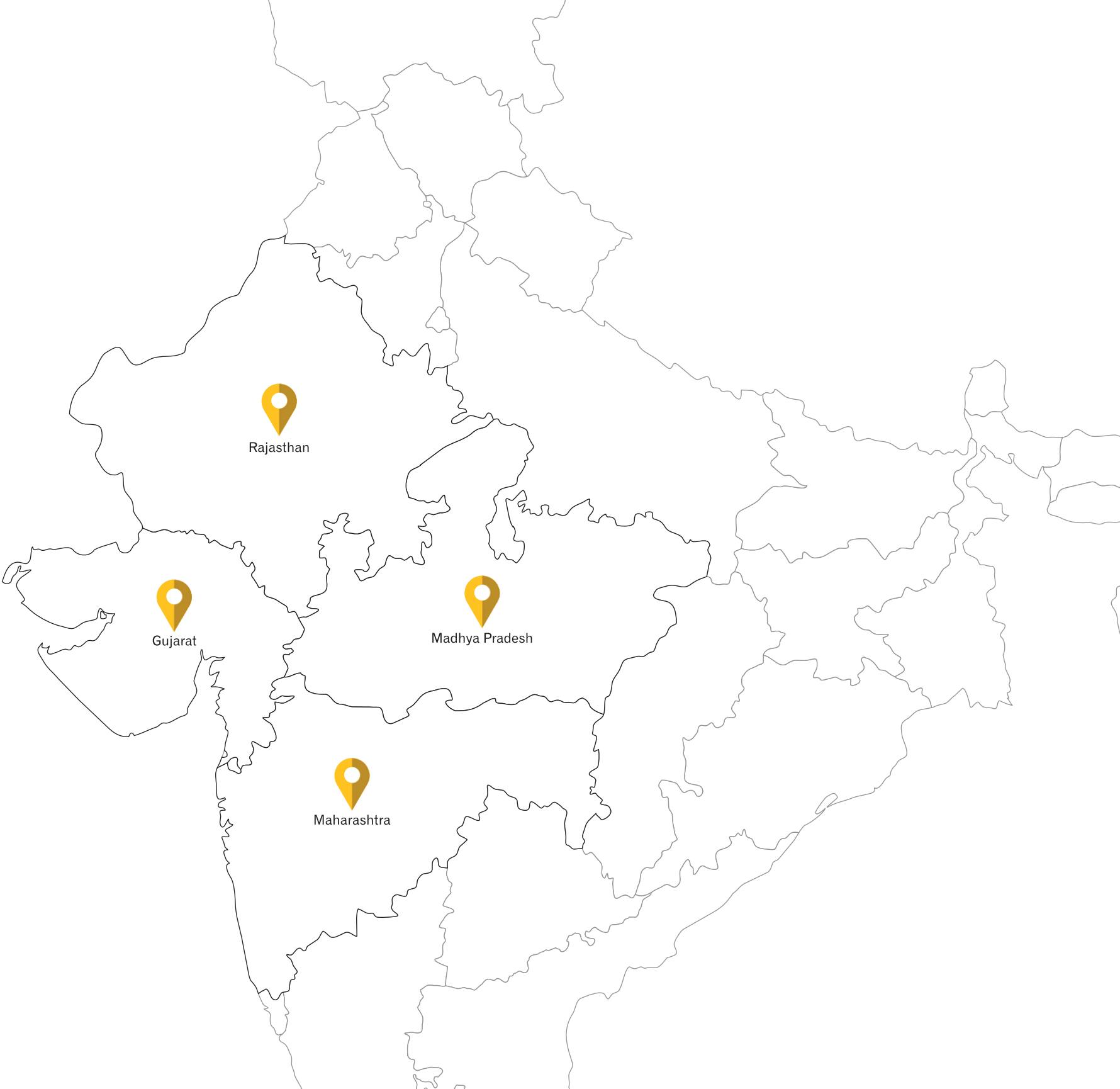
We, at GOD TMT, have a presence across Gujarat, Rajasthan, Maharashtra and Madhya Pradesh.

A PROMISE IS LIVED EVERY TIME WITH GOD WITHIN

Every bar is physically and chemically tested before the delivery



CERTIFICATIONS



BUILD THE FUTURE WITH GOD WITHIN

GOD TMT Bars owes its popularity to a proficient and diligent management team that strives toward customer satisfaction. We not only deliver on time, but also take supreme care in after-sales service. We are continually making a difference by providing perfect quality products, engineered with perfect processes, perfect prices and perfect customer-centric practices. Integrity, transparency, and responsibility are core values that push us to meet our promise of delivering 'The Perfect Steel.' With our superior quality and unshakable trust, we are rapidly making our presence felt across India. With GOD in your stride, we invite you to build a bright future.





SHREE PARMESHWAR STEELS PVT. LTD.

220/E, G.V.M.M, Odhav, Ahmedabad-382 415, India.

Mobile : +91-99251 41050, 98240 16910

sp@parmashwarsteel.com | www.parmashwarsteel.com

*This brochure is only for advertisement and it shall not be considered as a part of legal document.
Due to continual improvements, the information is subject to change without prior notification.*